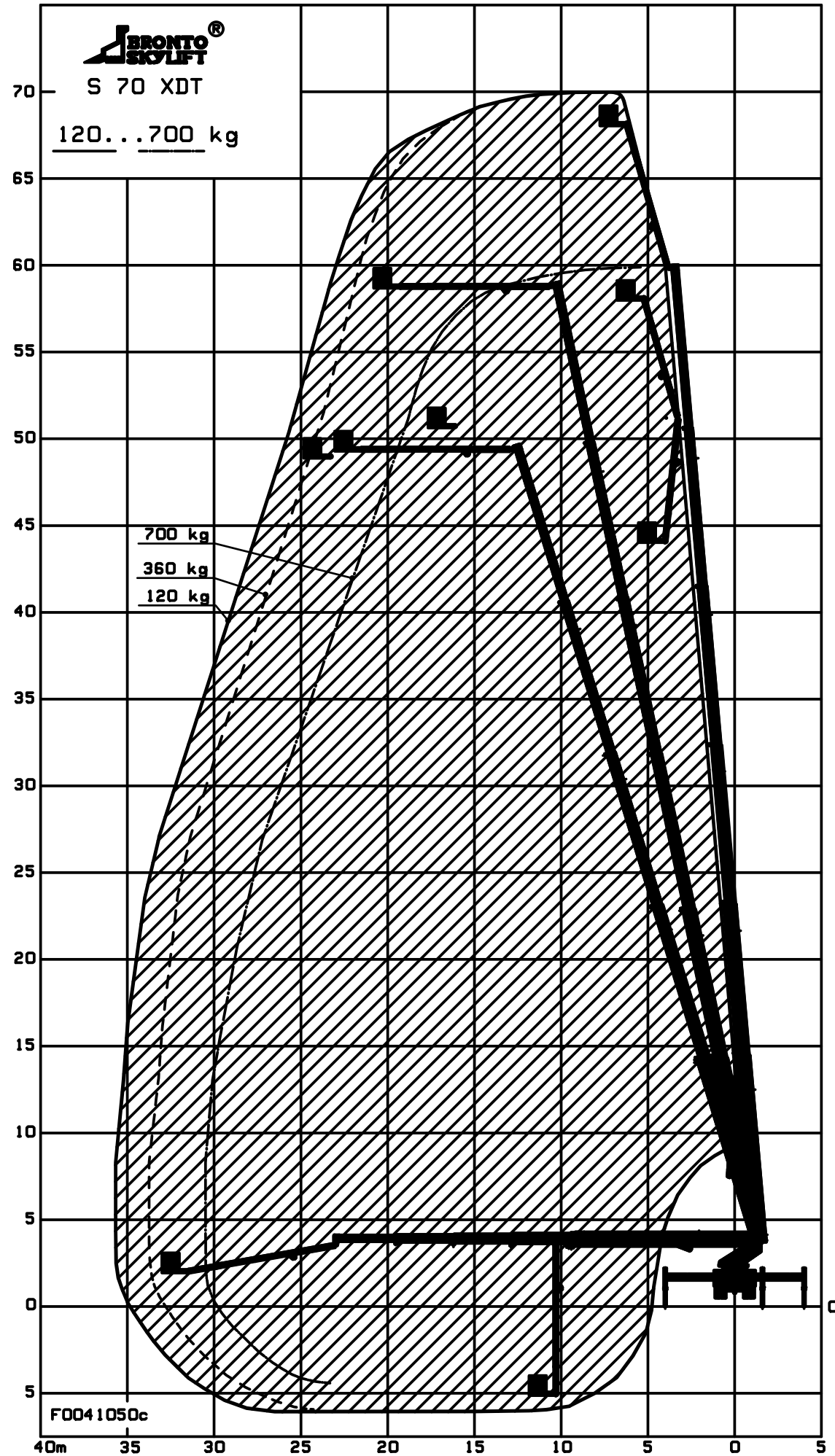


NOTE 1 :PRELIMINARY
 NOTE 2 :
 REMARKS :GVH 36t



TECHNICAL DATA	
Safe working load max.	: 700 kg
Max. permitted wind speed	: 12.5 m/s
Typical GVW	: 36.0 ton
min. operating weight	: 34.0 ton
Outrigger width and length c/c	
- normal jacking	: 8.0/6.7 m
- one side jacking	: 5.6/6.7 m
- narrow jacking	: 3.2/6.7 m
Calculation code	:

All rights reserved Anderungen vorbehalten Sans reserve de modification		Valmistaja pidättää oikeuden muutoksiin Reservation für Änderungen	
1	225	BRONTO S 70 XDT	
(A2)	OUTREACH DIAGRAM		DRAWN KKe 2005-06-23
code:	0	SAFE WORKING LOAD MAX 700 kg	APP'V'D
BRONTO SKYLIFT BRONTO SKYLIFT OY AB FINLAND		LAYER F0041050	REV C
		BRONTOCAD	